

Informed Consent Form for CLIMAtE change citizens engagement toolbox for dealing with Societal resilience (CLIMAS) Grant agreement number 101094021

This Informed Consent Form has two parts:

1. Information Sheet (to share information about the study with you);
2. Certificate of Consent (for signatures if you choose to participate).

Part I: Information Sheet

We would like to invite you to participate in the European research project CLIMAS.

This information sheet should provide you with the necessary information to decide whether you want to participate in the CLIMAS project as a survey participant. We want to emphasize your participation in the project is completely voluntary. You can decide to stop your participation in the project without giving any reason at any moment. Nevertheless, we hope very much that you will decide to participate in the CLIMAS project. If you have any questions about the project and your role therein, please contact the researcher. (Lucia Cristea)

INTRODUCTION

CLIMAS is a Consortium coordinated by VILNIUS TECH. CLIMAS brings together 13 partner organisations from universities, research, municipal and regional administration and consulting from Lithuania, Austria, Belgium, Germany, Greece, Italy, Latvia, Romania, Spain, and the UK.

FUNDER

The project “CLIMAtE change citizens engagement toolbox for dealing with Societal resilience” (CLIMAS) receives funding of € 2 817 902,50 from the European Commission under the Funding Programme “Horizon Europe” within the call “Climate, Energy and Mobility”. The project has a duration from 1.1.2023 to 31.12.2025.

PURPOSE OF THE RESEARCH

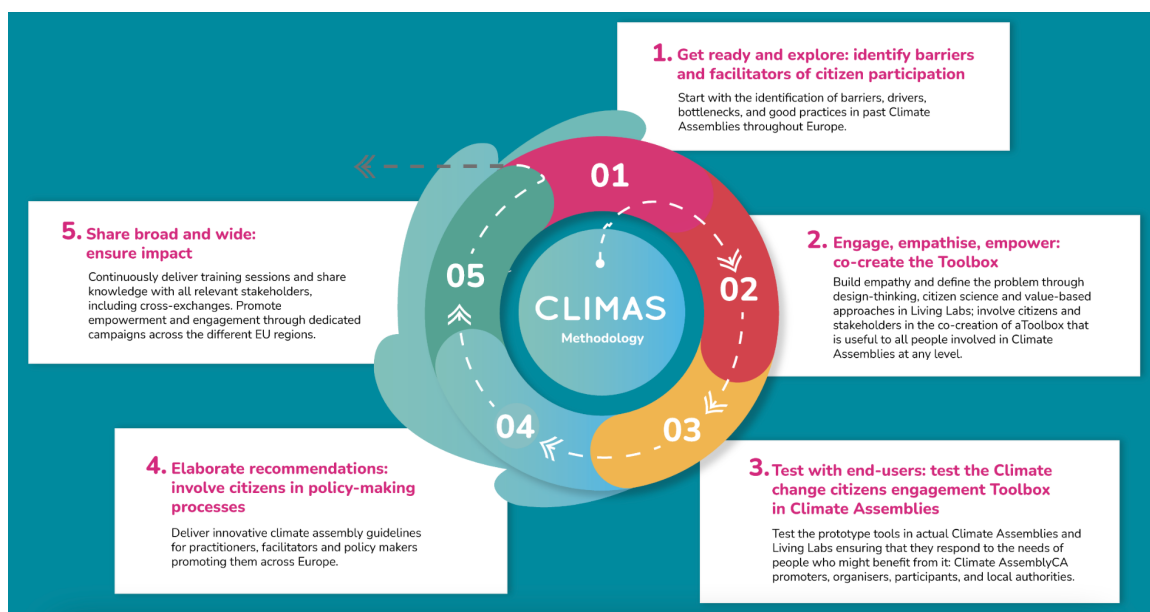
The main goal of CLIMAS is to support the transformation of cities and regions to climate resilience. We think that involving citizens in this transformation is the most promising approach towards reaching this goal, i.e. via Climate Assemblies and Living Labs. However, until today there are many different instruments around and people interested in Living Labs and Climate Assemblies lack tested instruments to involve citizens and stakeholders. This is,



where CLIMAS comes in. It is the aim of CLIMAS to create and test an innovative and problem-oriented climate adaptation Toolbox of Living Labs and Climate Assemblies. This Toolbox will be co-designed together with citizens and stakeholders. In order to involve citizens and stakeholders and their needs as much and as meaningful as possible, CLIMAS will apply a values-based approach, starting from peoples' problems, design thinking methods and citizen science mechanisms.

TYPE OF RESEARCH INTERVENTION

It is the purpose of CLIMAS, to create together with citizen and stakeholders a Toolbox for effective and efficient citizen participation. To achieve this goal, the project must pass several steps which are shown in the following graph. In each of the stages, citizens and stakeholders will be involved, either in workshops, interviews, or surveys.



PARTICIPANT SELECTION

Before starting to co-create the Toolbox with stakeholders and citizens, we would like to know about European cities' capacities and experiences to involve citizens in the design and implementation of activities to improve their climate resilience. Since you are familiar with these topics, we invite you to participate in our survey. We will not be collecting any personal data. The data you provide only offer an overview of your thoughts and insights of relating to stakeholder engagement mechanisms. The data collection activities ensure that the previous experience of and perspectives of the participants are considered in the design of Climate change citizens engagements Toolbox

VOLUNTARY PARTICIPATION

Your participation in this CLIMAS survey it up to you and completely voluntary. If you decide to participate in the survey, you are free to withdraw at any time without giving us any reasons. This will not have any consequences for you whatsoever.



RISKS

There are no risks associated with your participation in the project.

BENEFITS

We hope that CLIMAS will co-create together with citizens and stakeholders a Toolbox that is useful to all people involved in Climate Assemblies and Living Labs at any level. By sharing your knowledge, ideas, experiences and concerns in this survey, you will make a critical contribution to achieve this important goal. Naturally, we will share the results of CLIMAS once they are finalised with you.

REIMBURSEMENT

There will be no reimbursement for the participation in the project.

CONFIDENTIALITY

The project will collect some personal data of research participants. Research data that contains personal data will only be used for the purpose within the CLIMAS project for which it was specified and received your informed consent (You can see the purpose you gave consent to under “Participant selection”).

To ensure the security and confidentiality of your personal data “CLIMAS will implement appropriate technical and organisational measures, such as access controls, encryption, and regular backups. Moreover, CLIMAS will monitor and control access to personal data, ensuring that only authorised personnel have access to it. CLIMAS is under the contractual obligation to retain the project’s data for up to five years after the end of the project (unless auditors request further retention). After the expiry date of the retention period, and unless further legitimate grounds for retention arise, partners are obliged to dispose of personal data securely.

WHAT TO DO IF YOU DECIDE TO PARTICIPATE IN CLIMAS

Please read the information sheet and the consent form carefully. If you have any questions, please ask the person, who gave you this information sheet or whose name is provided at the bottom of the information sheet. If all your questions with regard to participation in CLIMAS have been clarified, please send/give it to the person mentioned below.

SHARING OF RESULTS

Parts of the material of research might be published in research reports, teaching materials and academic publications and funding proposals. “CLIMAS is under the contractual obligation to retain the project’s data for up to five years after the end of the project (unless auditors request further retention). After the expiry date of the retention period, and unless further legitimate grounds for retention arise, partners are obliged to dispose of personal data securely.



CONTACT FOR FURTHTER INFORMATION:

Lucia Cristea - European Integrated Projects

lucia.cristea@eiproject.eu

Part II: Certificate of Consent

I was invited to participate in the European research project CLIMAS. The main goal of CLIMAS is to support the transformation of cities and regions to climate resilience. We think that involving citizens in this transformation is the most promising approach towards reaching this goal, i.e. via Climate Assemblies and Living Labs. However, until today there are many different instruments around and people interested in Living Labs and Climate Assemblies lack tested instruments to involve citizens and stakeholders. This is, where CLIMAS comes in. It is the aim of CLIMAS to create and test an innovative and problem-oriented climate adaptation toolbox for Living Labs and Climate Assemblies. The CLIMAS toolbox will be co-designed together with citizens and stakeholders. In order to involve citizens and stakeholders and their needs as much and as meaningful as possible, CLIMAS will apply a values-based approach, starting from peoples' problems, design thinking methods and citizen science mechanisms.

It is the purpose of CLIMAS, to create together with citizen and stakeholders a toolbox for effective and efficient citizen participation. To achieve this goal, the project must pass several steps which are shown in the previous graph. In each of the stages, citizens and stakeholders will be involved, either in workshops, interviews, or surveys.

I have read the foregoing information sheet. I have had the opportunity to ask questions about it and any questions I have been asked have been answered to my satisfaction. **I consent voluntarily to be a participant in this survey, by clicking the consent box in the survey.**

